

Statcon Energiaa Pvt Ltd

# [REMOTE MONITOR]

THE OFF LINE SOFTWARE FOR MONITORING

STATCON ENERGIAA PVT LTD  
10/27/2016

## INTRODUCTION

The Remote Monitoring is an off line monitoring software for the inverters of STATCON ENERGIAA PVT LTD. It is easy to use for the user. You have to simply connect your system with the software and then you can easily access maximum possible data from your system.

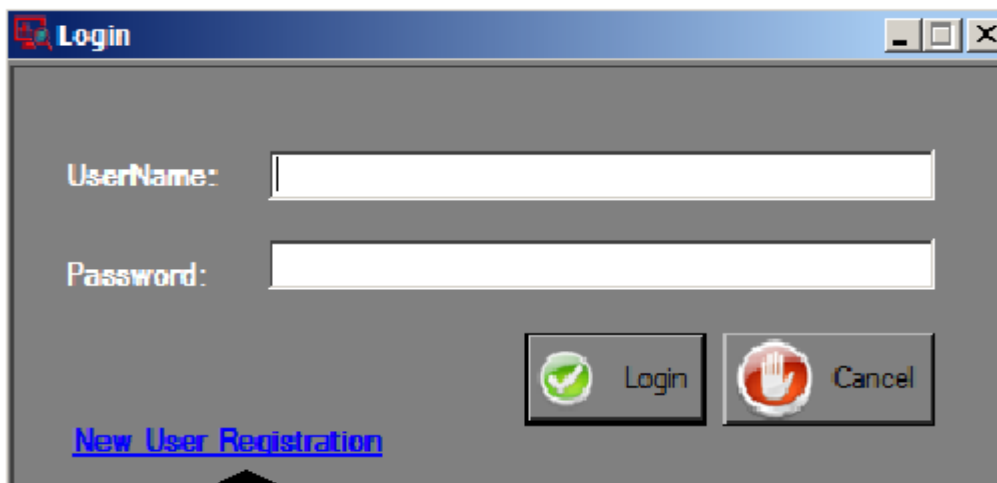


## HOW TO INSTALL

Users have to install two more software's along with the Remote Monitor software for full excess. These three softwares are as follows.

- Remote Monitor
- SAP Crystal Report\_32bit/64bit\_ver-13\_0\_18.
- dotNetFx40

When a user 1<sup>st</sup> time install the software he has to make new user id, password as shown in image.



click here to create a new user Id password

Image - 1

After creating a user id password a new form will be open user have to fill System Information. As shown in image.

The image shows a software window titled "PlantDetail" with a dark background. It contains several input fields for system information. A calendar pop-up is visible over the "Installation Date" field, showing the month of October 2016. The calendar has a header "October, 2016" and a table of dates. The date 24 is highlighted in blue. Below the calendar, the text "Today: 24-10-2016" is displayed. At the bottom of the form, there is an "OK" button and a green link that says "Click here to erase Downloaded Data".

Mon	Tue	Wed	Thu	Fri	Sat	Sun
26	27	28	29	30	1	2
3	4	5	6	7	8	9
10	11	12	13	14	15	16
17	18	19	20	21	22	23
24	25	26	27	28	29	30
31	1	2	3	4	5	6

Today: 24-10-2016

Image – 2

After installing these three users can access most of the things in this version which is a non Premium version for full version user have to purchase the licence for premium version from the STATCON ENERGIAA PVT LTD. For this user have to send a code to the statcon Energiaa pvt ltd.

which is generated in the software and appears on the top of the software windows. As shown in the image 1.

To become premium user please share '163210221030' to Statcon.

Image – 3

**HOW TO USE**

Here you have got five Tabs. Which are as follows?



Image - 4

**DASHBOARD**

User can access data related to their energies and power with images as seen in image below.

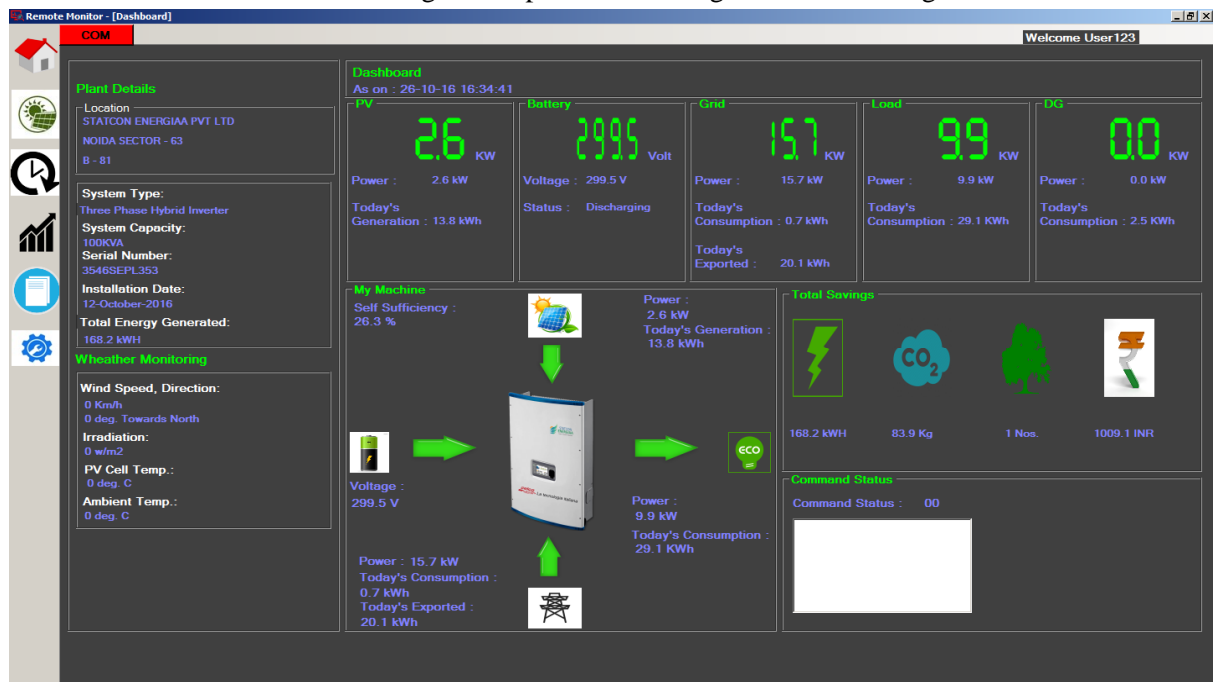


Image – 5

Dashboard page is divided into 10 parts which are as follows.

➤ **Plant Details**

In this part user can all the information about site like address, capacity, type, serial number, installation date, and total energy (PV) Generated.

➤ **Weather Monitoring**

In this part user can see all the information about outer conditions like wind speed, direction, irritation, PV cell temperature, Ambient temperature.

➤ **My Machine**

In this part User can access data related to the Machine (Inverter) , Grid, PV and Load.

➤ **Command Status**

This section provides the Information about commands which are applied by the User to Inverter and indication for DG set also.

➤ **Total Savings**

In this section User can see all type of savings like how much electricity saved (In KWH), in terms of Rupees, in terms of Tree saved and CO2 saved.

➤ **PV**

This Section provides the values, PV Power and Today Generation from Channel 1.

➤ **Battery**

This Section provided the Battery Voltage and status like charging, discharging.

➤ **Grid**

This section provides information about grid Grid Power, Today Consumption and Today Export.

➤ **Load**

This Section Provides Total Load Power and Today Load Consumption.

➤ **DG**

This section Provides, DG power and Today Consumption.

MY MACHINE
------------

This Page contains little common section as in DASHBOARD page which are Plant Details, Weather Monitoring and My Machine. As shown in Image.

And rest sections are explained below.

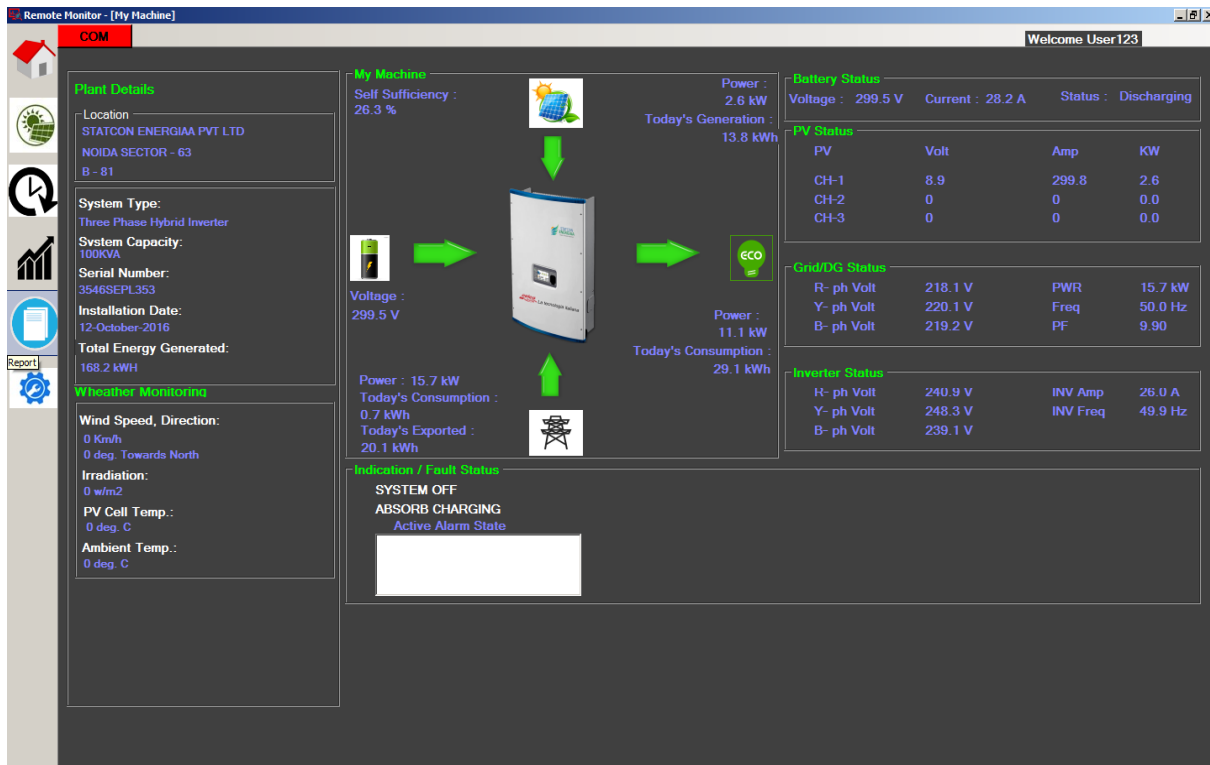


Image – 6

➤ **Indication / Fault Status**

This section provides the information about the faults or indications of inverter.

➤ **Inverter Status**

This section provides information about the Inverter like Voltage, Current and Frequency.

➤ **Grid/DG status**

This section provides the Information of Grid/DG like Voltage, Power, Frequency and the PF.

➤ **PV Status**

This section provides information from three PV channels like Voltage , current and power.

➤ **Battery Status**

In this section battery information is available like Voltage, Status and current.

SYSTEM LOGS

This Page also contains few common sections which are Plant Details, Weather Monitoring and Indication/Fault Status. As shown in Image.

And the rest are explaining below.

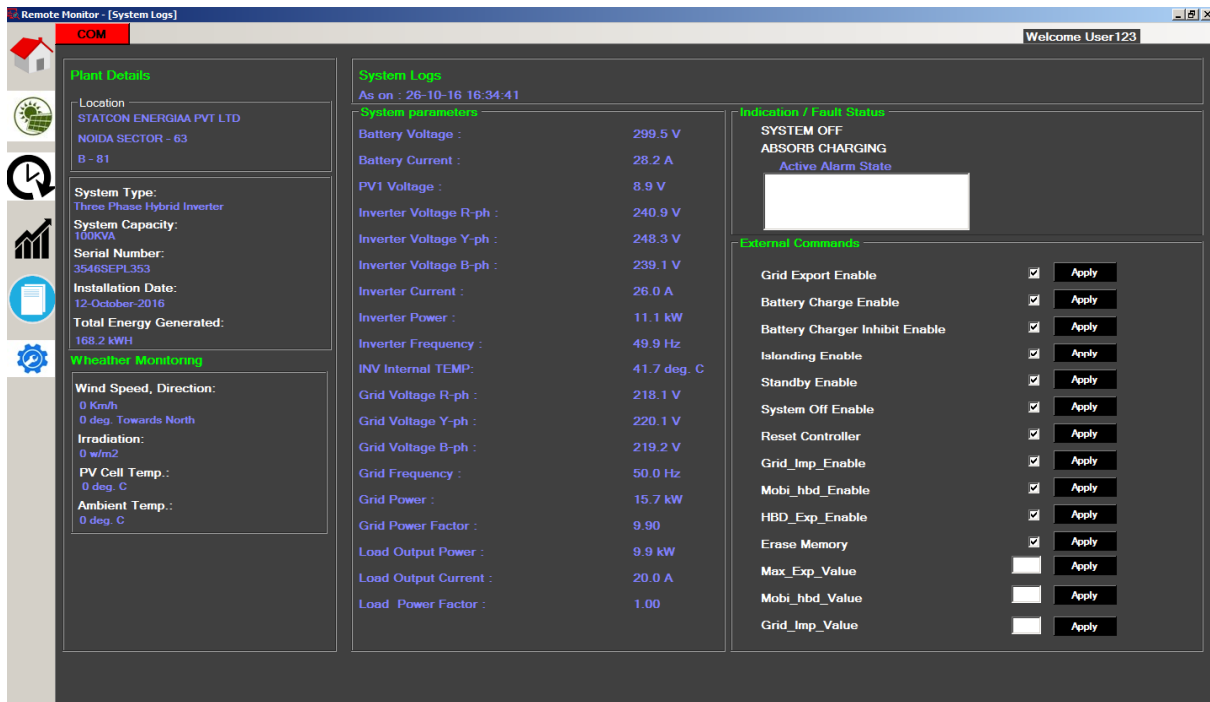


Image – 7

➤ **System Parameters**

Here User can access the maximum possible information from the system like, Data about Inverter, data about Grid, data about PV data about Load etc.

➤ **External Commands**

Only Premium Users can access this section which is used to control the system like User can start stop charger, disconnect grid, and control Export Import etc.

**GRAPHS**

This page also contains two common sections named Plant Details and Weather Monitoring. And this page provides the information in form of Graphs user can generate the Graphs By selecting the dates in between user wants the data. Three graphs are available here.

- 1- Power Generation and consumption shows power of PV, Grid, DG, and Load (in KW).
- 2- PV Generation it provides only PV power.
- 3- Energy Generation/Consumption it provides information about Energies of PV, Grid, DG, and Load (in KWH).
- 4- And user can also save the Images for graphs.

As shown in image.

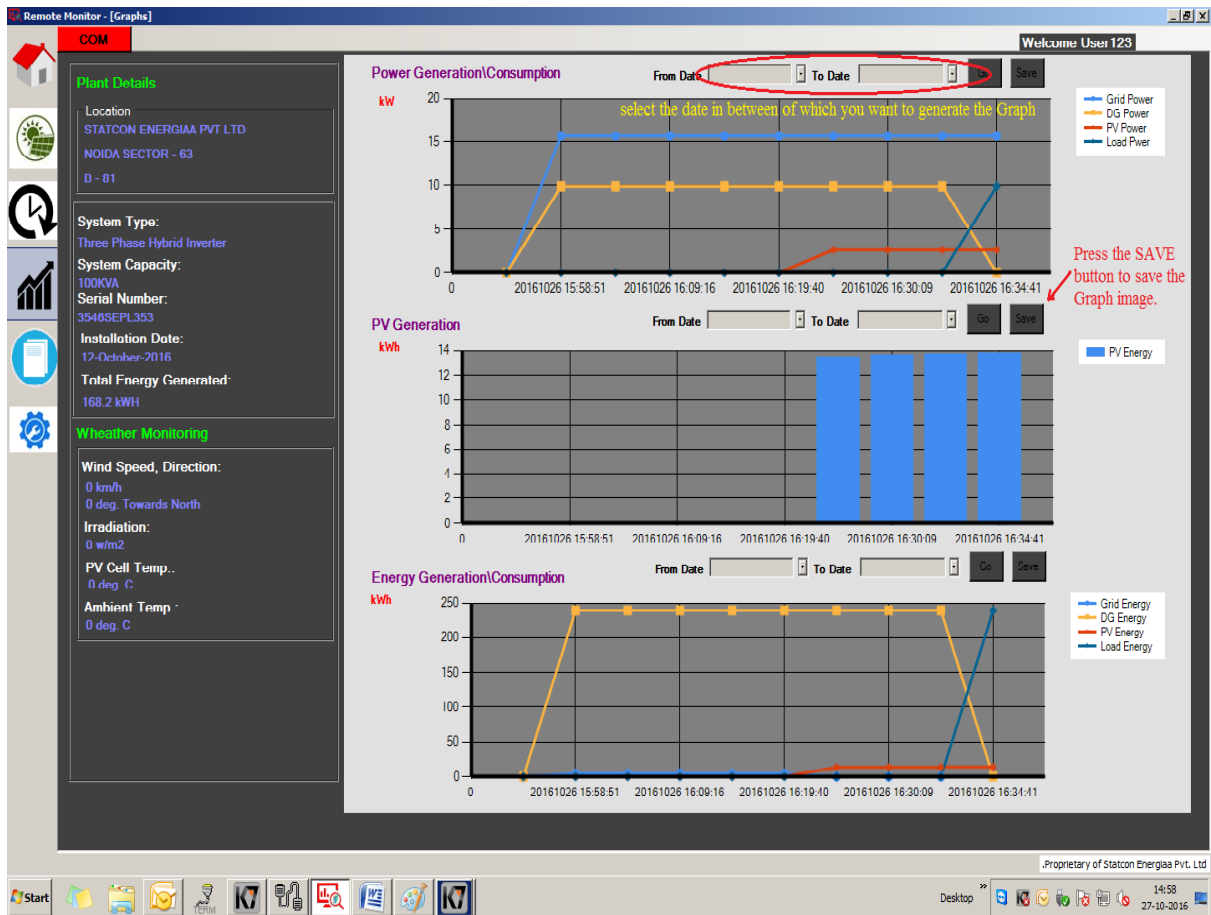


Image – 8

**REPORT**

User can generate system report also for this simply click on Report tab then a report will be generated in Pdf. Format user can select other format like word, excel and can print report. As shown in image.

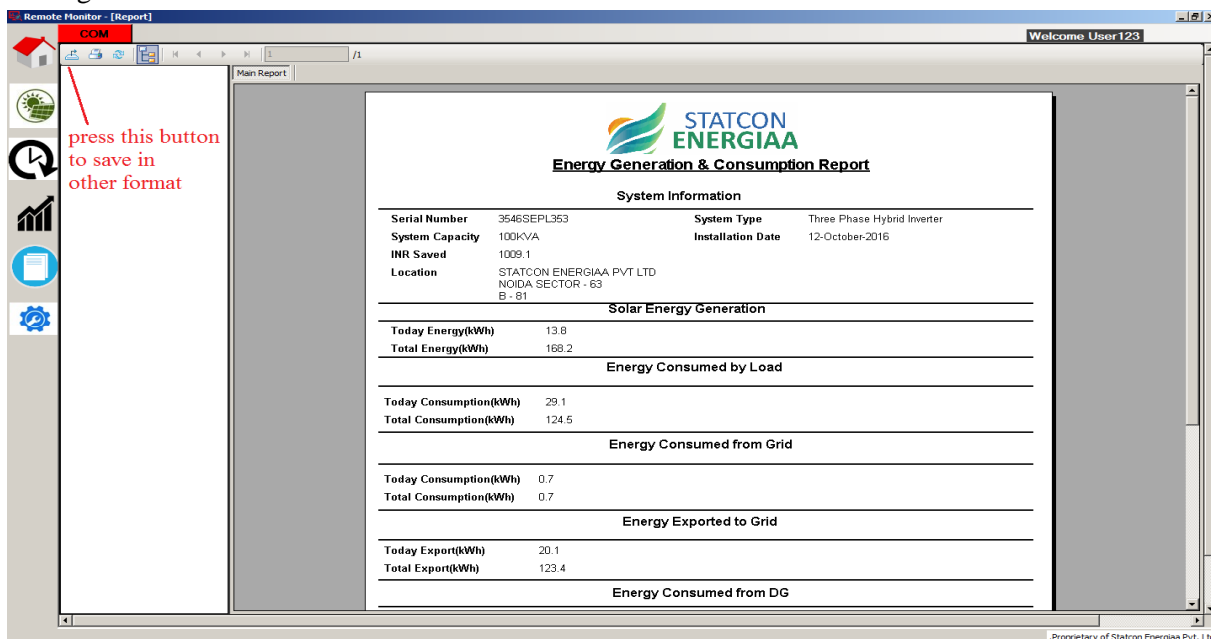


Image – 9